

# Chemistry A European Journal



Chemistry  
Europe

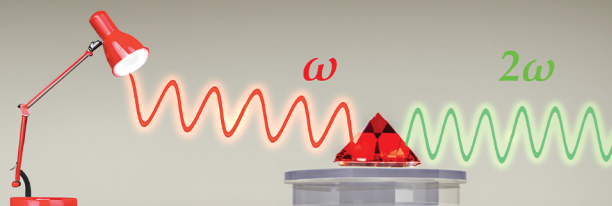
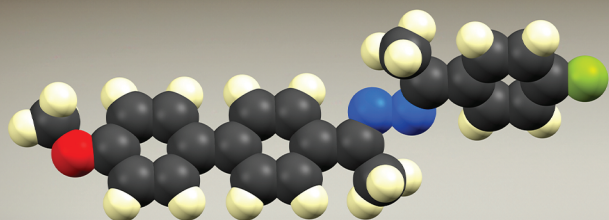
European Chemical  
Societies Publishing

## Front Cover:

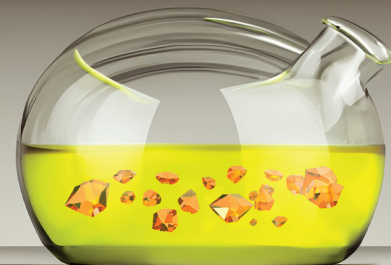
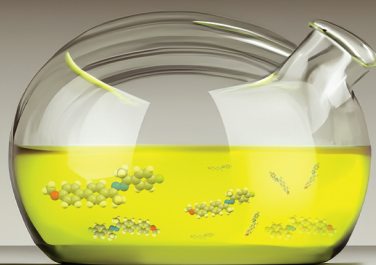
R. Glaser and co-workers

Perfect Polar Alignment of Parallel Beloamphiphile Layers: Improved Structural Design Bias Realized in Ferroelectric Crystals of the Novel "Methoxyphenyl Series of Acetophenone Azines"

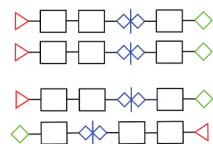
(MeO-Ph, Y)-AZINES



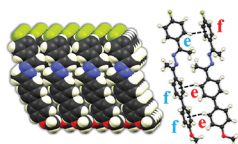
NLO active azine crystal



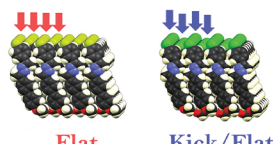
Polar (MeO-Ph, Y)-azine crystals



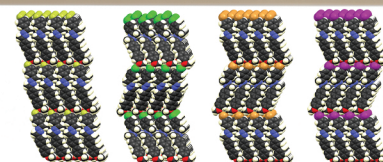
Rational Design



Triple T-contacts



PBAM architecture



Ferroelectric PBAM Stacking